

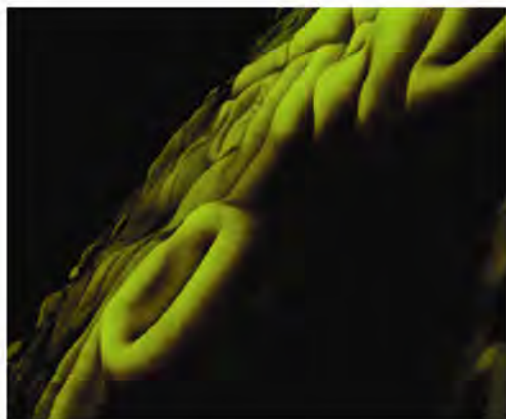
The Routledge Companion to Research in the Arts

NEW!

Edited by **Michael Biggs**, University of Hertfordshire, UK
and **Henrik Karlsson**, Gothenburg University, Sweden

ORDER YOUR COPY OVERLEAF AND GET 20% OFF!

The Routledge Companion to Research in the Arts



Edited by Michael Biggs and Henrik Karlsson

The Routledge Companion to Research in the Arts is a major collection of new writings on research in the creative and performing arts by leading authorities from around the world. It provides theoretical and practical approaches to identifying, structuring and resolving some of the key issues in the debate about the nature of research in the arts which have surfaced during the establishment of this subject over the last decade. It will provide a point of reference for the further development of that debate in the years to come by making specific assertions about what this phenomenon is (or is not) so that subsequent scholars will have something definite to agree with or to criticise.

This critical anthology benefits from a wide range of contributors from all of the major constituencies in arts-based research. The contributions are located in the contemporary intellectual environment of research in the arts, and more widely in the universities, in the strategic and political environment of national research funding, and in the international environment of trans-national cooperation and communication. The book is divided into three principal sections – Foundations, Voices and Contexts – each with an introduction from the editors so as to orientate the reader with regard to the main issues, agreements and debates.

This comprehensive collection makes an original and significant contribution to the field of arts-based research by setting down a framework for addressing these, and other, topical issues. It will be essential reading for research managers and policy-makers in research councils and universities, as well as individual researchers, research supervisors and doctoral candidates.

The Routledge Companion to Research in the Arts addresses a wide variety of concepts and issues, including:

- the diversity of views on what constitutes arts-based research and scholarship
- the trans-national communication difficulties arising from terminological and ontological differences in arts-based research
- traditional and non-traditional concepts of knowledge, their relationship to professional practice, their outcomes and audiences
- a consideration of the role of written, spoken and artefact-based languages in the formation and communication of understandings.

September 2010: 246x174: 584pp

Hb: 978-0-415-58169-1: ~~£125.00~~ £100.00

For a **Review Copy** or a **Library Recommendation Form**
email christina.stead@tandf.co.uk

